



Co-financed by the European Regional Development Fund

Inspire Policy Making with Territorial Evidence

ESPON TIA Tool

Zintis Hermansons

Project expert, ESPON EGTC

Reglab's analyst network, May 20, 2021

Overview

- **TIA Quick Check method**

- **Online Webtool**

- **Examples**

- **Ongoing developments**



ESPON TIA TOOL

Welcome to TIA Tool

The ESPON TIA Quick Check is an interactive tool assessing ex ante the territorial impact of legislations, policies and directives. It allows the user to make a "quick and dirty" ex-ante analysis of the potential impact of EU legislation, policies and directives on the development of regions, which might be unanticipated and undesirable.

The tool combines expert knowledge gathered in a workshop with a set of statistical data describing the characteristics of regions. The users are guided through the different steps of the impact analysis and receive assistance and guidance for preparing a territorial impact analysis.

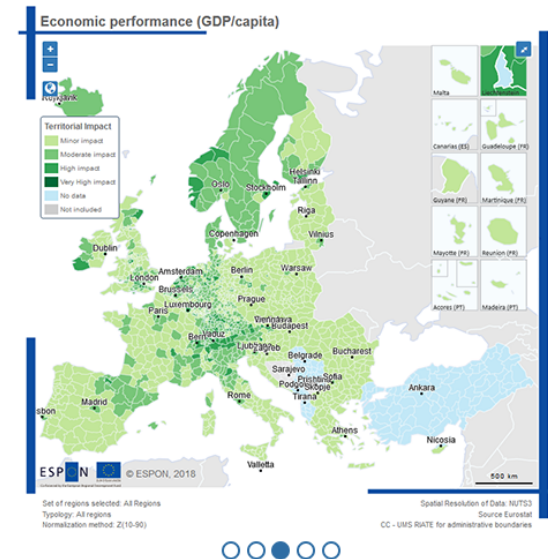
The ESPON TIA Tool is developed to help steering an expert discussion in a workshop setting on the territorial effects of an EU policy proposal by checking all relevant indicators. Detailed information on how to use the ESPON TIA Tool can be found in the documents below. Institutions that are interested in using the ESPON TIA Tool are welcome to contact the ESPON EGTC

You can check if a policy proposal would be suited for a Territorial Impact Assessment with the TIA necessity check functionality

TRY DEMO

START

NECESSITY CHECK



<https://apps.espon.eu/TiaToolv2>

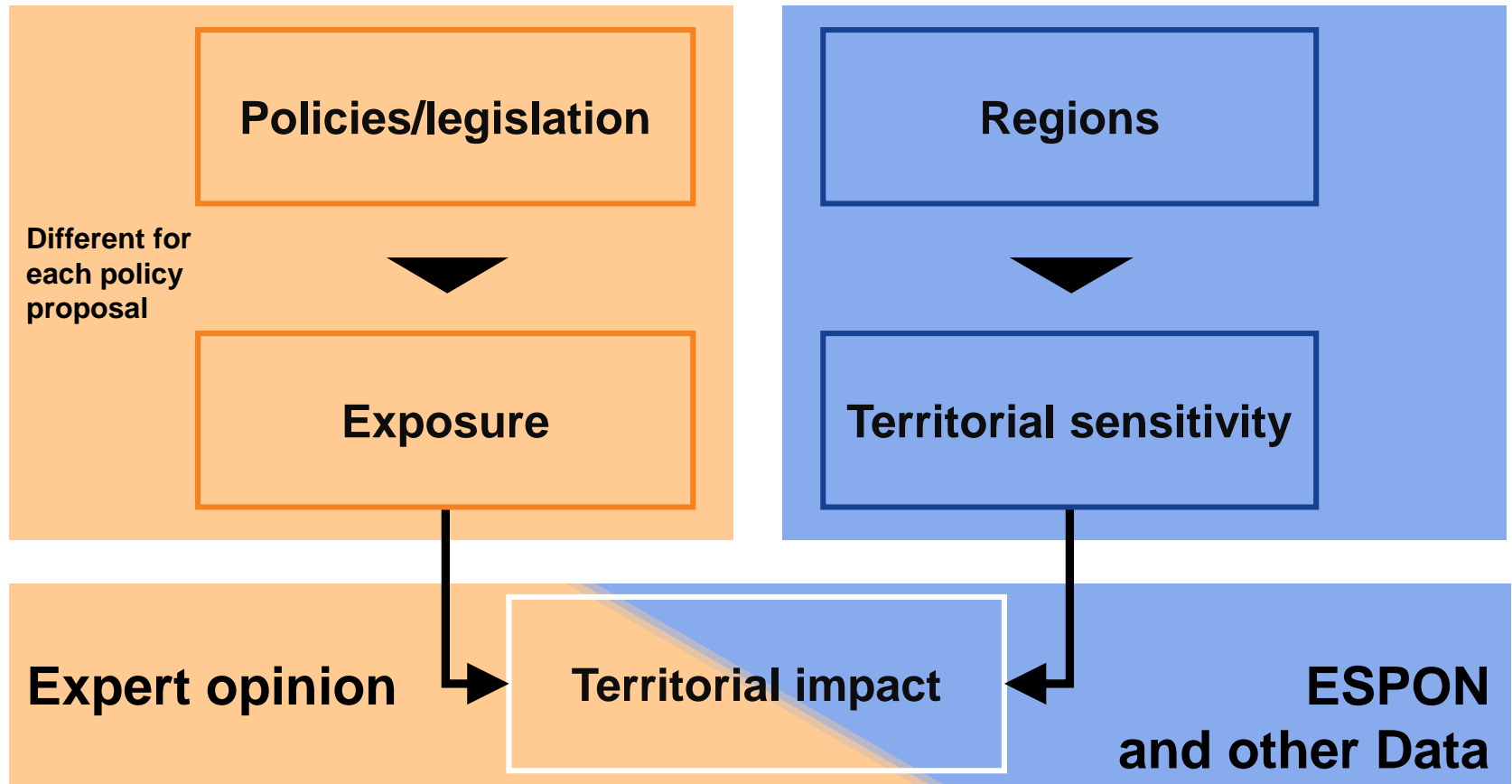
ESPON TIA Quick Check

- Policy/legislative proposals influence development of different regions differently – territorial effects
- EC's Better regulation guidelines recommend carrying out territorial impact assessment
- Specifically, [Toolbox No 33](#) mentions using ESPON TIA tool as an option

The TIA Quick Check approach

- A “quick and dirty” TIA-check – one day workshop
- Combines expert knowledge gathered in a workshop setting with standardised indicators included in the TIA tool
- TIA results visualized in maps (NUTS 3 level)

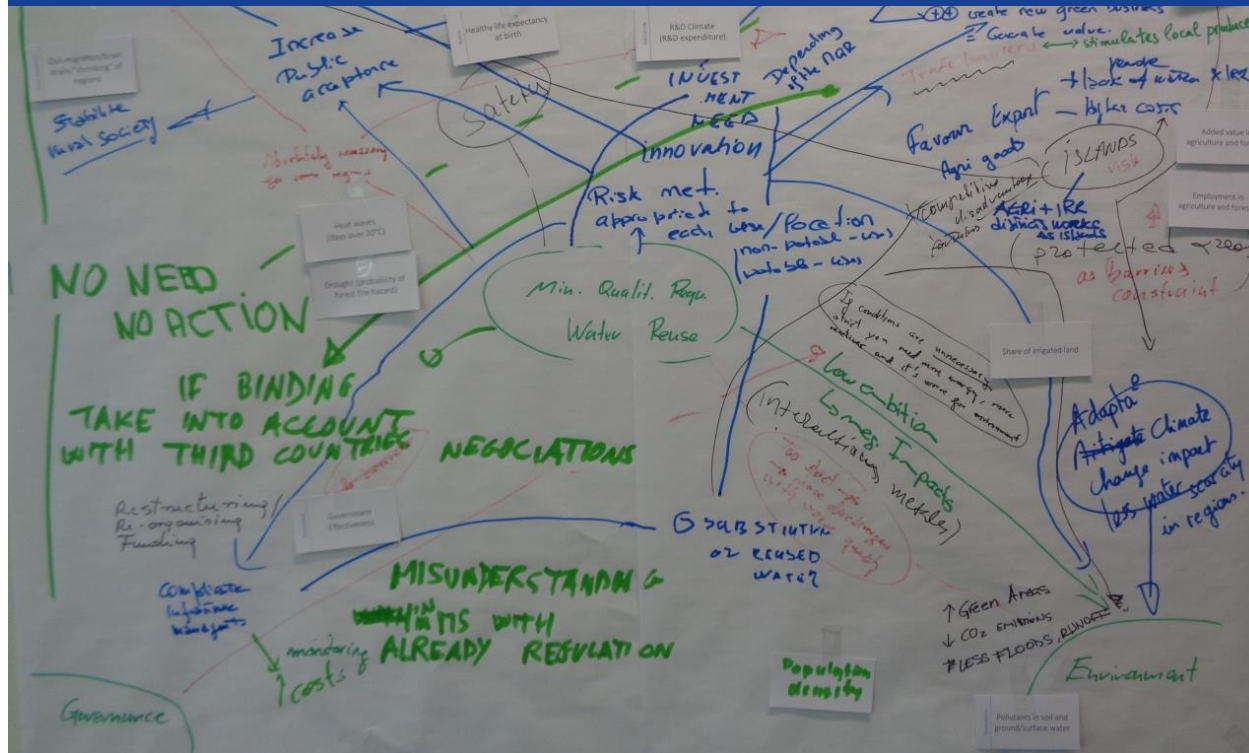
TIA Quick check: based on vulnerability concept of the IPCC



Exposure: brainstorming on systematic picture in a workshop setting

Creating a systemic picture, linking the policy/legislative proposal with territorial effects

Economy
Society
Environment
Governance



What is the intensity of exposure in economy, society, environment, governance?

- Systemic picture
- Indicators selected according to the systemic picture
- Individual expert judgement

Economic growth (GDP/capita)

strong
advantageous

++

☐

weak
advantageous

+

☐

neutral/no/
unknown

0

☐

weak
disadvantageous

-

☐

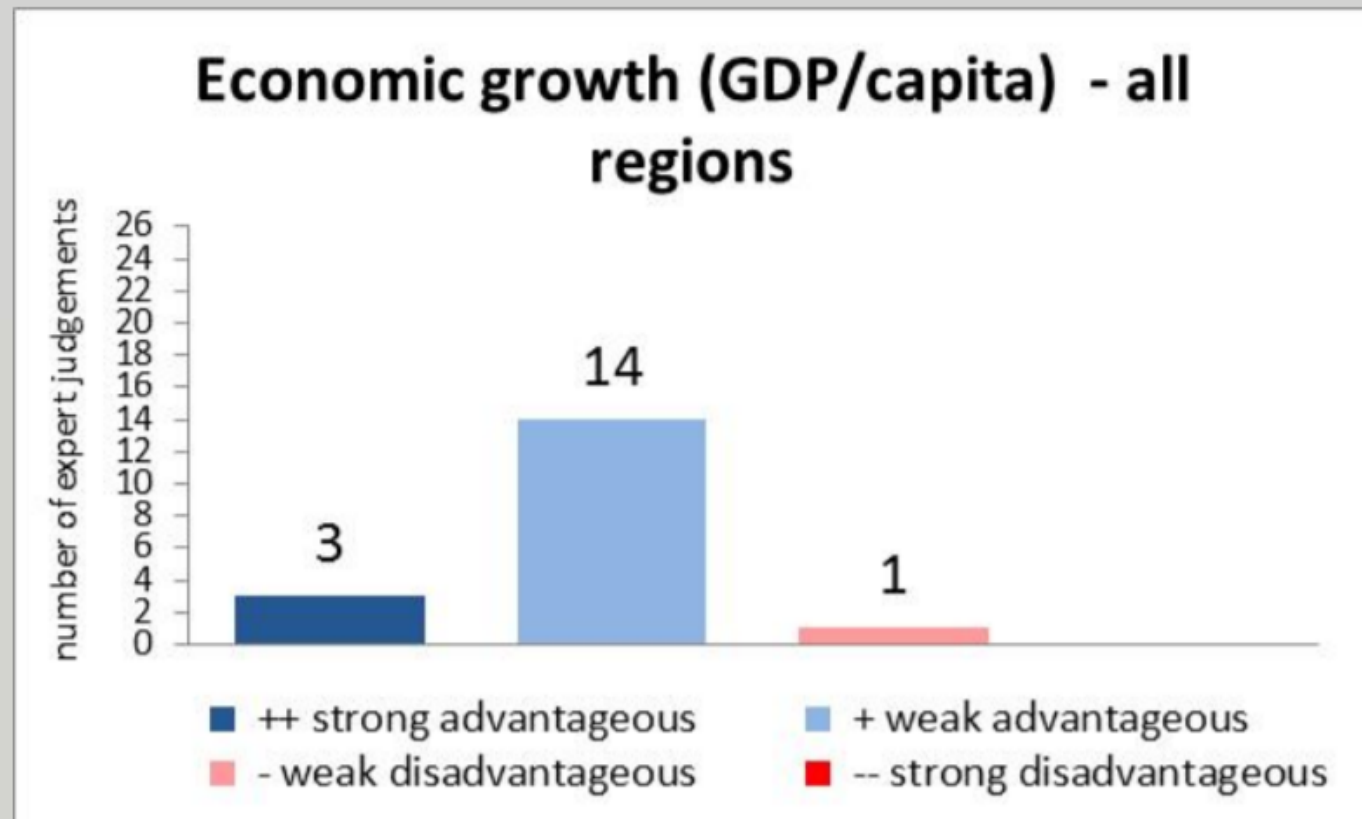
strong
disadvantageous

--

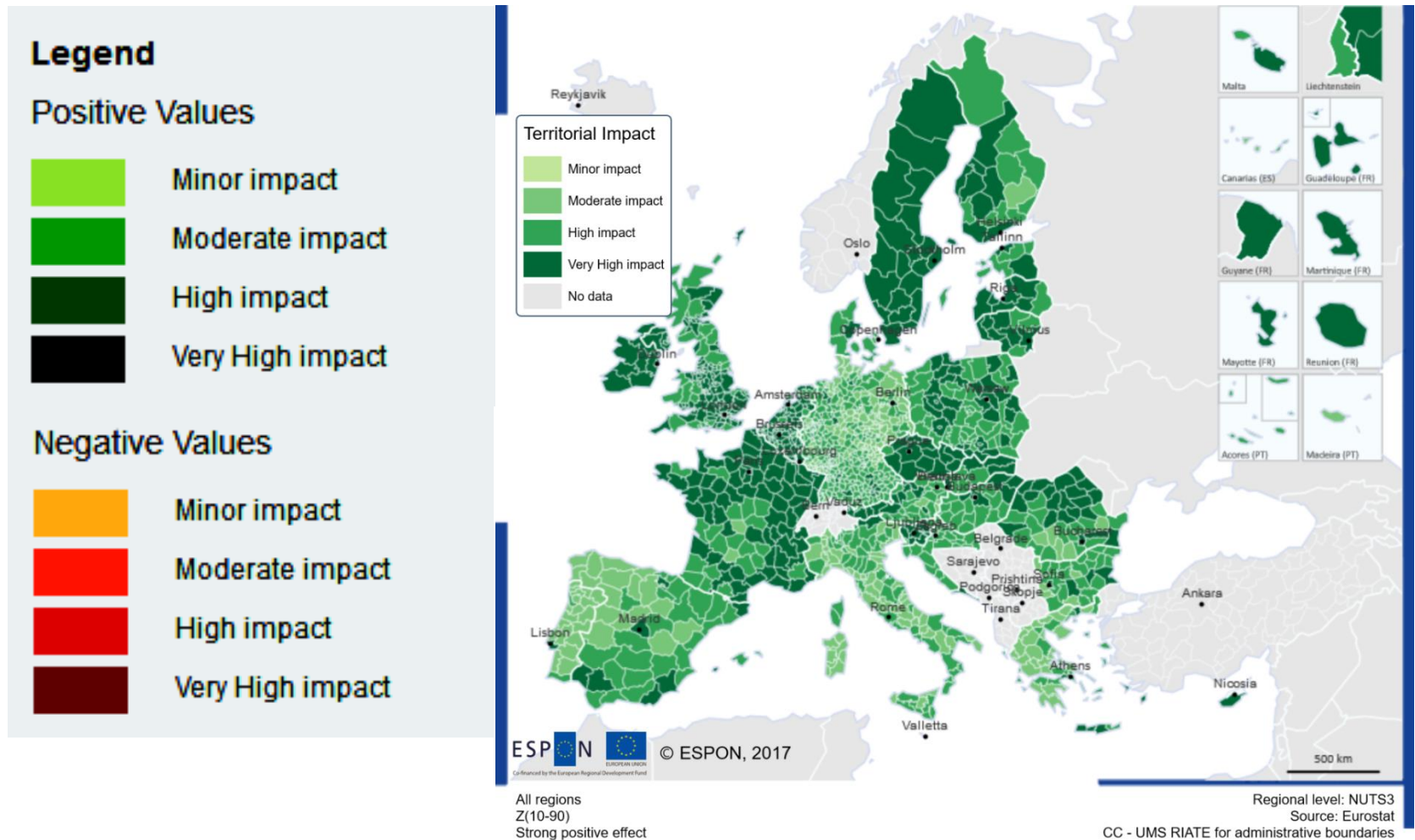
☐

Exposure: expert voting on selected impact indicators

Exposure: Expert judgement



Exposure+ sensitivity= potential territorial impact (positive or negative)



Different types of TIA possible:

General TIA

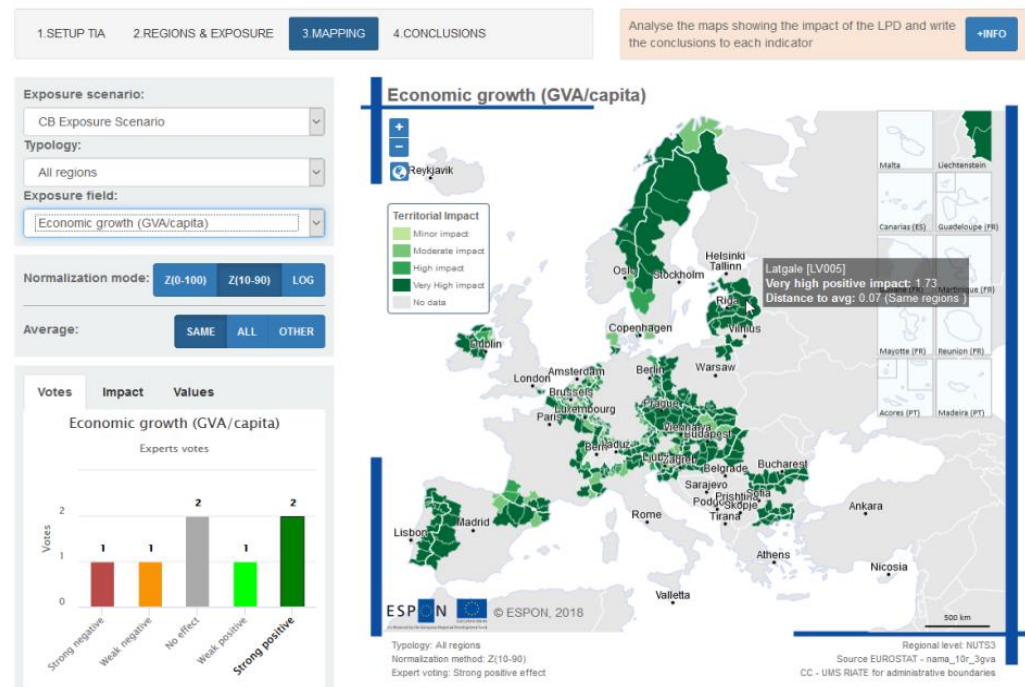
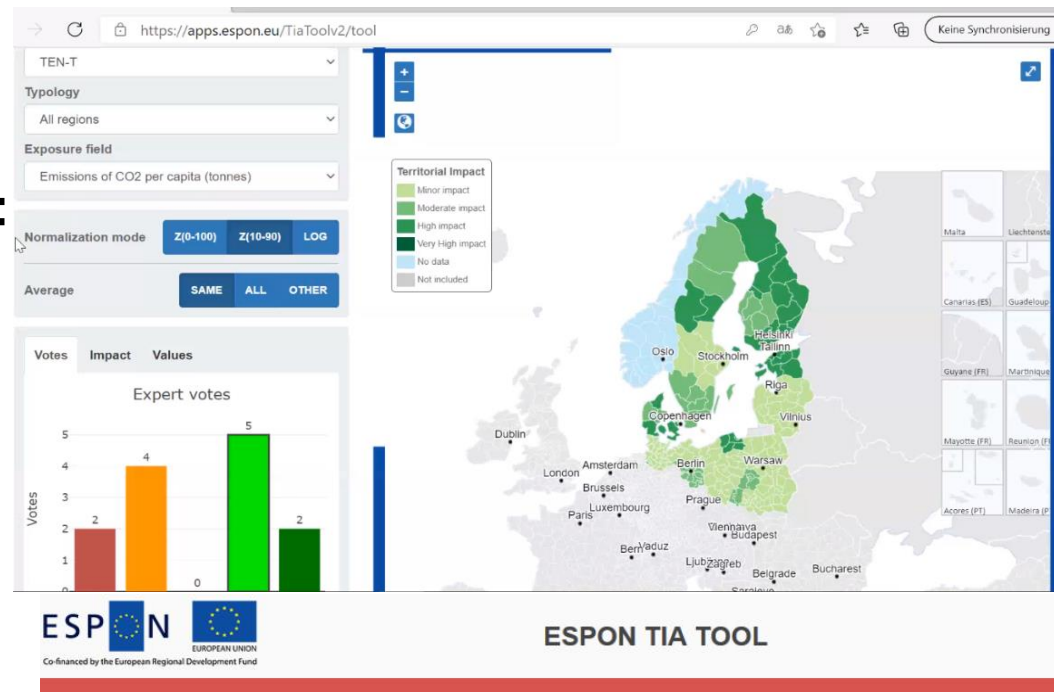
- All regions
- Rural regions
- Islands
- Mountains
- ...

Urban IA

Cross-border TIA

TIA on user selected areas

- Baltic sea region
- ...



Final steps of the TIA

- Discussion on what can be seen in the TIA maps and “does it make sense”
- Testing the initial hypothesis of the possible TIA outcomes
- Providing possible explanations of the TIA results and elaborating recommendations
- Writing a report on outcomes of the TIA workshop – ensuring a proper documentation

Example of a TIA reports: <https://cor.europa.eu/en/our-work/Pages/Territorial-Impact-Assessment.aspx>

Lessons learned along the way

Main new developments following lessons learned during the ESPON 2020 Cooperation Programme:

- TIA necessity check
- Urban, rural and cross-border proofing
- Updated indicators and data
- Fuzzy typologies
- Aggregation of impacts
- Training Curriculum
- Online TIA workshops

Thank you

Zintis Hermansons

Project Expert

ESPON EGTC - Luxembourg

More information on the TIA tool and the methodology:

https://www.espon.eu/sites/default/files/attachments/TIA-Tool_moderators_guide.pdf